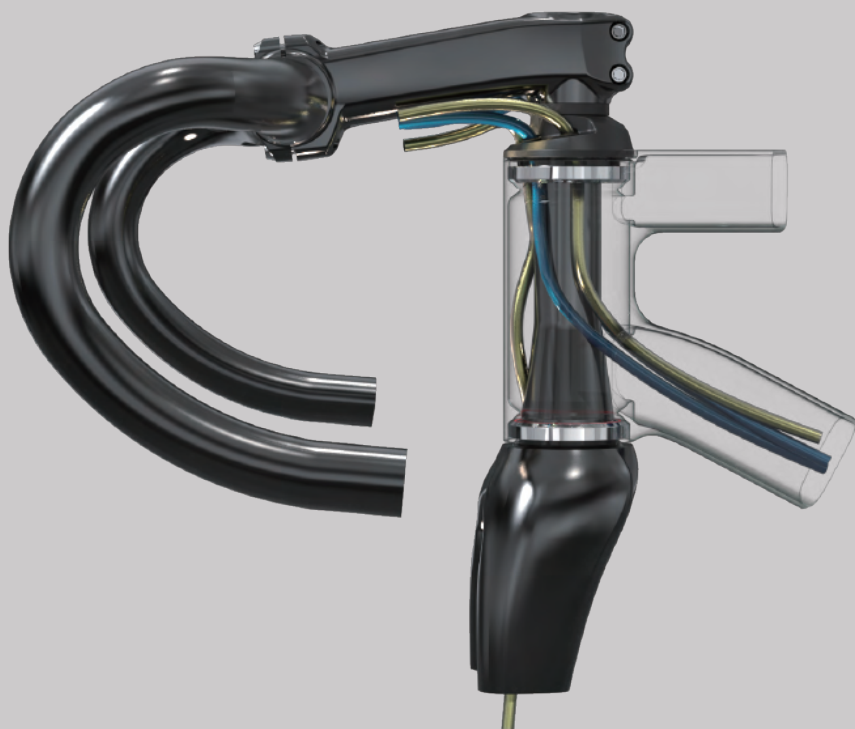


S-Box Headset

Semi-Integrated Cable Routing System

Semi-integrated cable routing system with individual cable seals for multiple seals options available.



Cable Seals
[by Order](#)



Top Cover



Top Cover Seal
OD52 / OD62
[by Order](#)



Micro Spacer



Star Compression Ring



Bearing Shield
[by Order](#)



Double Seals
Premium Bearing
45° or 36°
[by Order](#)



Upper Cup
Lower Cup
ZS or EC type
[by Order](#)

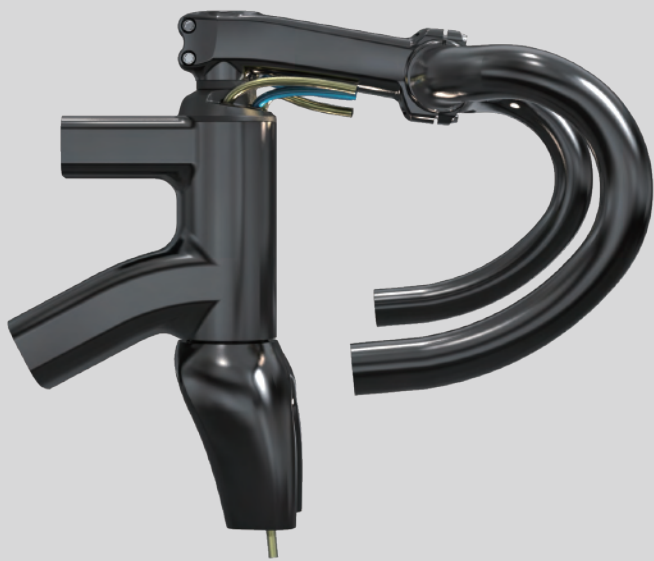


Double Seals
Premium Bearing
45° or 36°
[by Order](#)



Crown Race
45° or 36°
[by Order](#)





Bar & Stem: Standard

Fork: Molded with Hole for Front Disc Brake Cable

Excellent Water Seal Performance

Water Seals Inserted into the Cable Holes

Multiple Seals Options Available.

S-BOX

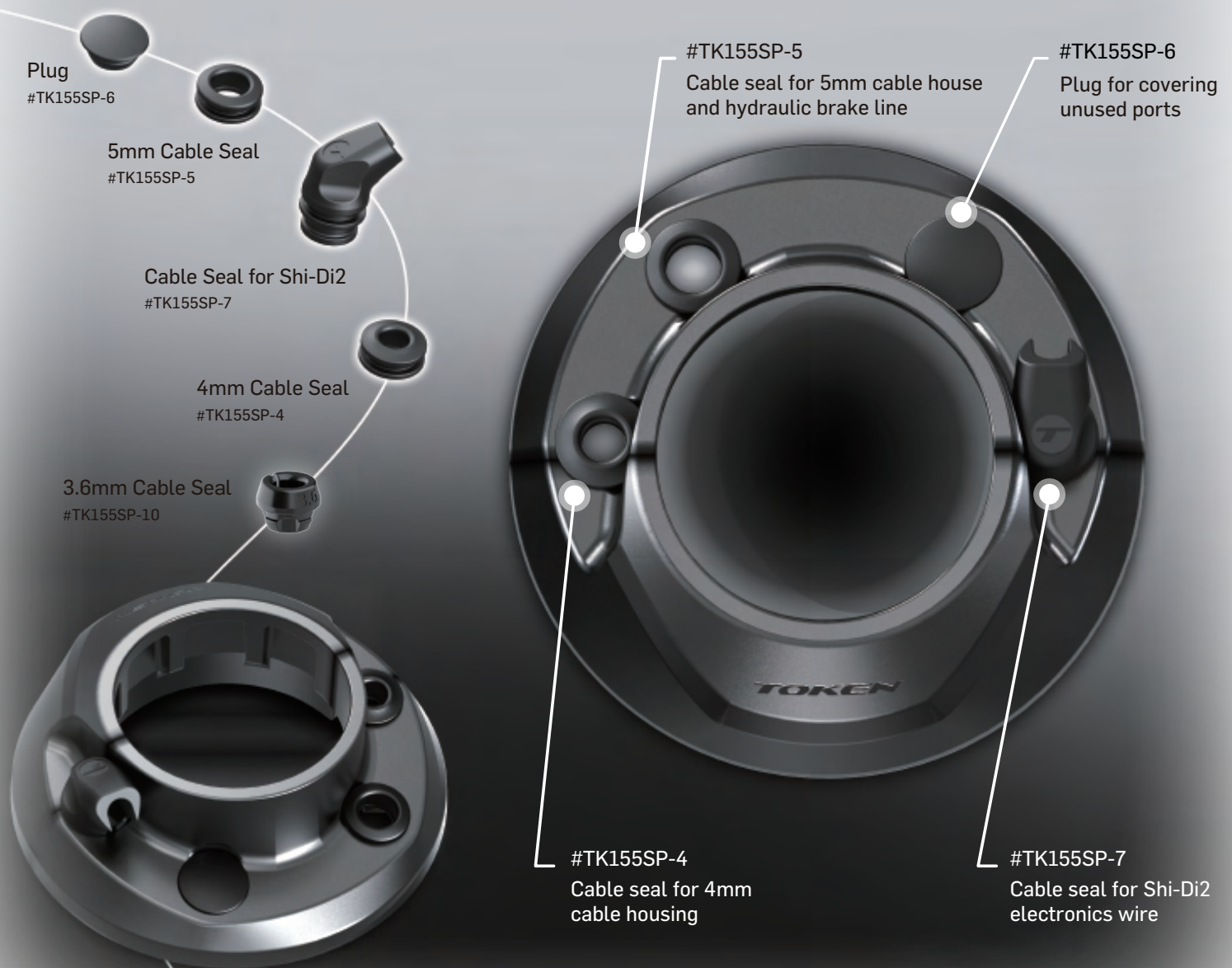


Fara F/All-Road (Image: © Josh Croxton)

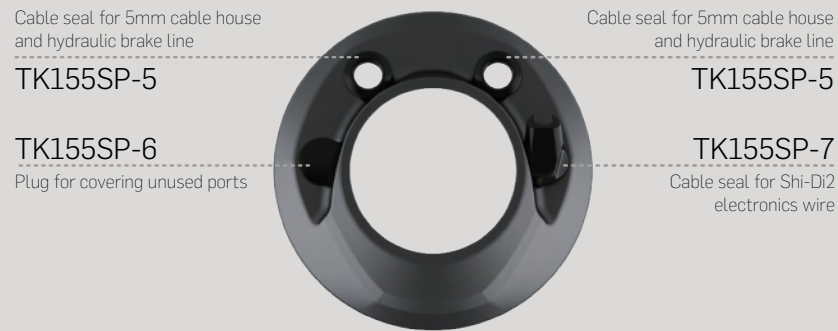
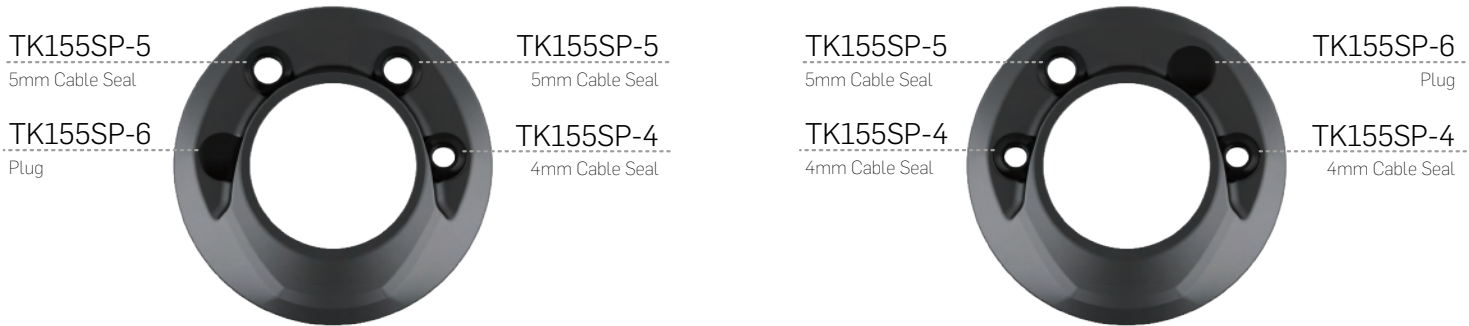
ORRO BIKE



Cable Seal Options for Wide Compatibilities



Cable Seal Options for Wide Compatibilities





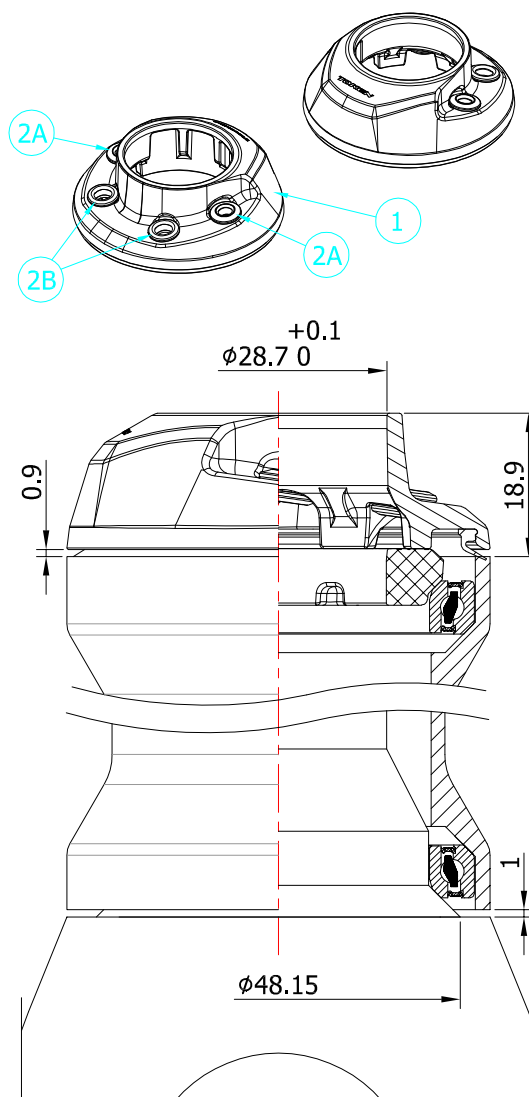
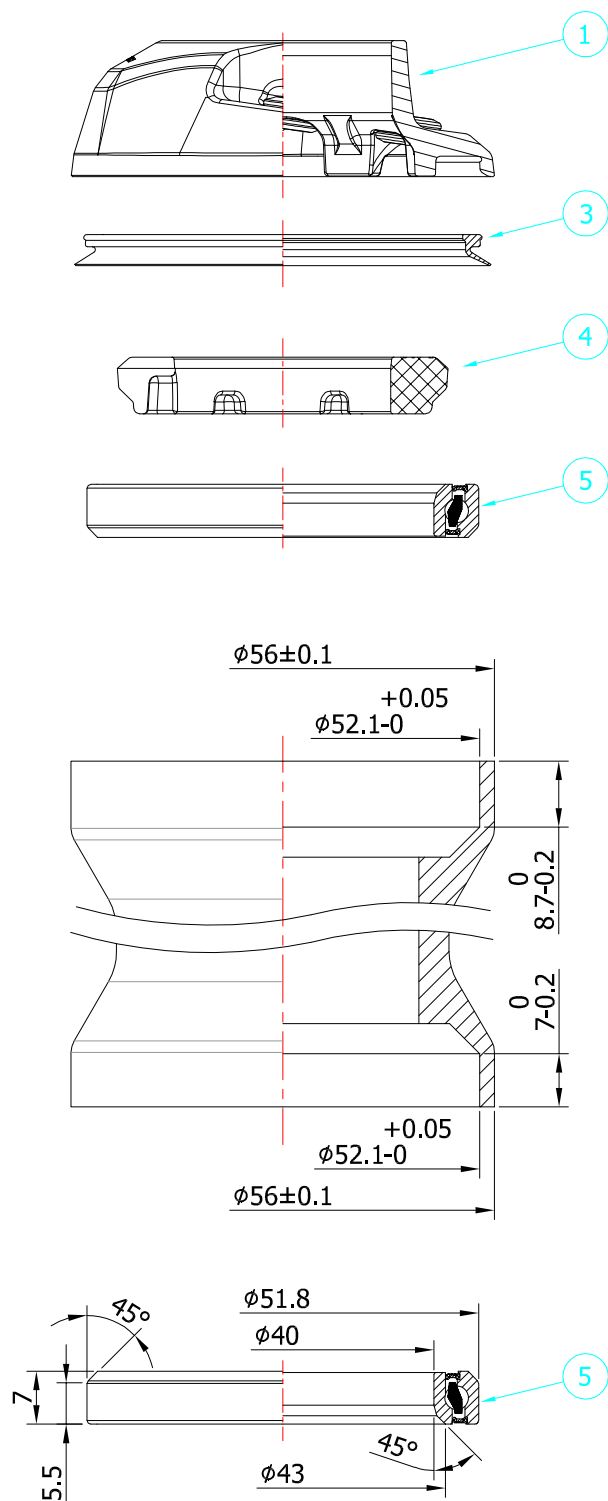
S-BOX

Semi-Integrated Cable Routing System

TK155SP-CHHC
TK155SP-TS-CHHC
S-Box Headset

 For $\phi 4$ mm Housing x2 + $\phi 5$ mm Brake Line x2

(TK155SP-TS-CHHC: With ⑤ Ti-Coated Bearings ACB52H7/4TS)



Stack Height: 18.9+1=19.9mm

SHIS code: IS52/28.6 | IS52/40

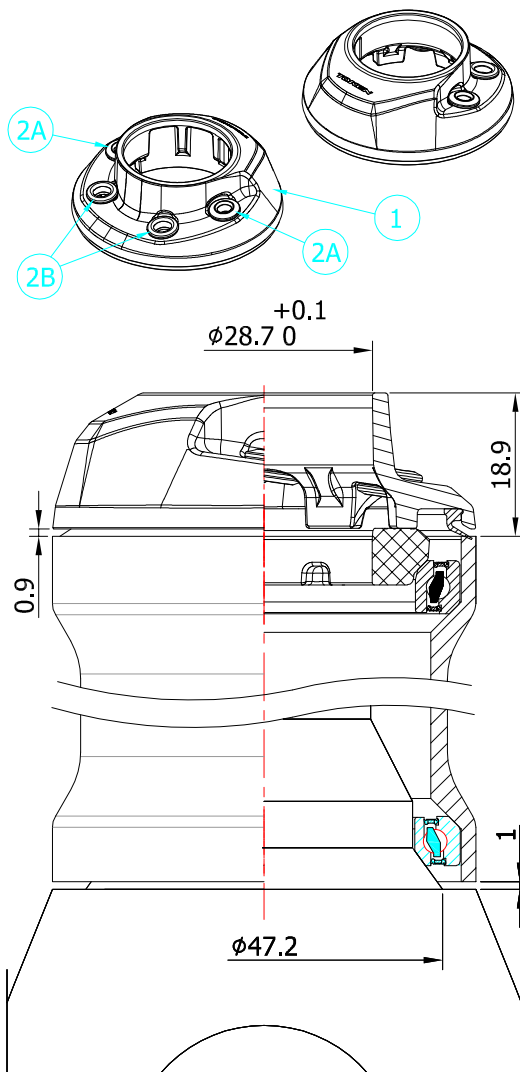
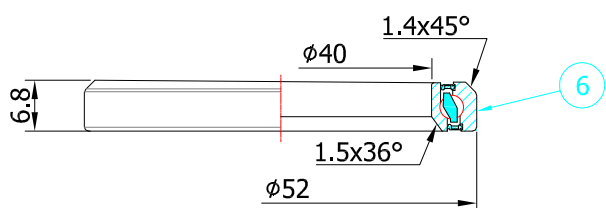
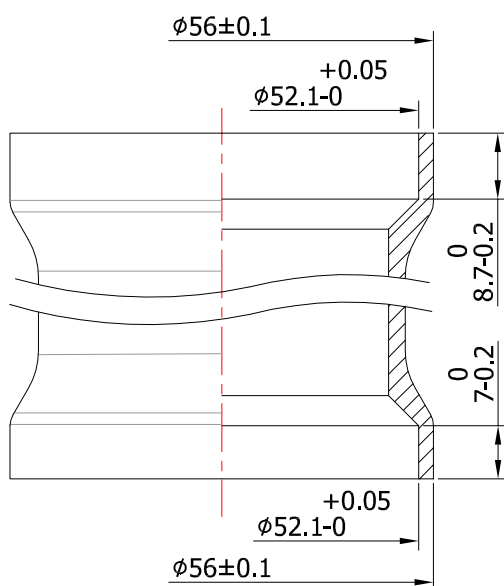
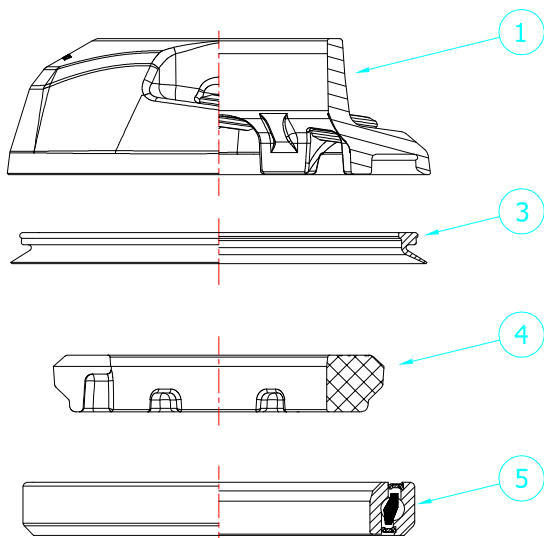
No.	Item	Material	Drawing	Q'ty
1	Top Cover	Composite	TK155SP-1	1
2A	Housing Seal 4mm	NBR	TK155SP-4	2
2B	Housing Seal 5mm	NBR	TK155SP-5	2
3	Top Cover Seal	NBR	TK155-1	1
4	Compression Ring	Composite	TK155-3	1
5	Premium Bearing	Steel	ACB52H7/4	2

Unit: mm

Scale: 1:1

 Revision E
 2021.11.24

TK155SP-36
S-Box Headset

 For $\phi 4\text{mm}$ Housing x2 + $\phi 5\text{mm}$ Brake Line x2

 Stack Height: $18.9 + 1 = 19.9\text{mm}$
SHIS code: IS52/28.6 | IS52/40

No.	Item	Material	Drawing	Q'ty
1	Top Cover	Composite	TK155SP-1	1
2A	Housing Seal 4mm	NBR	TK155SP-4	2
2B	Housing Seal 5mm	NBR	TK155SP-5	2
3	Top Cover Seal	NBR	TK155-1	1
4	Compression Ring	Composite	TK155-3	1
5	Premium Bearing	Steel	ACB52H7/4	1
6	Premium Bearing	Steel	TK52H65	1

Unit: mm

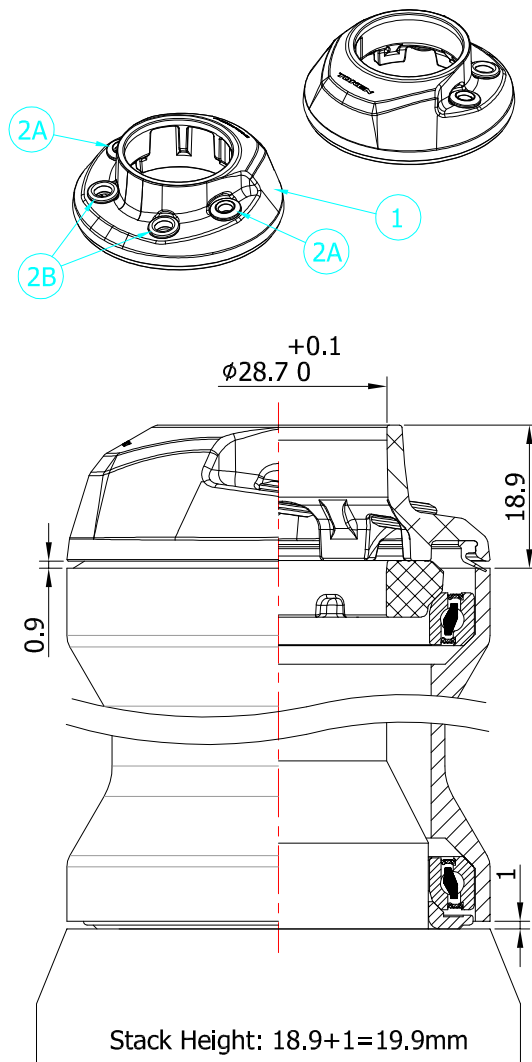
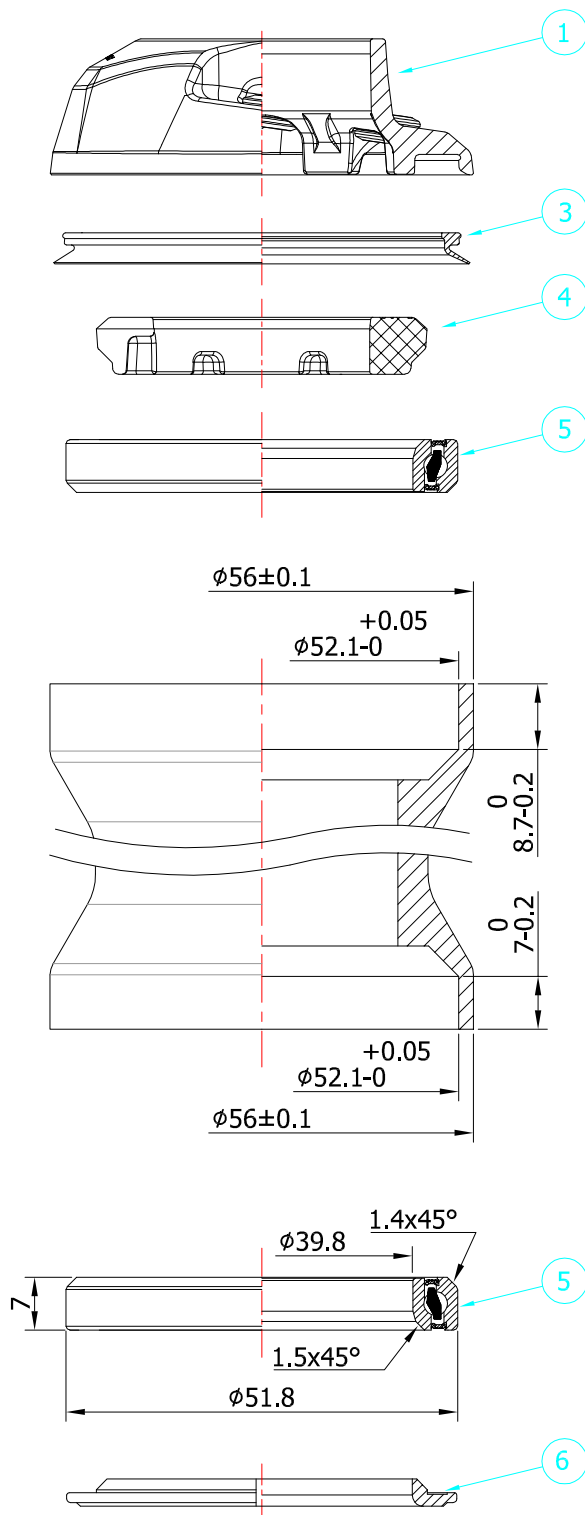
Scale: 1:1

 Revision A
2021.12.23

TOKEN HEADSET TECHNICAL MANUAL

TK1556SP-CHHC

S-Box Headset w/ Alloy Crown Race
For $\phi 4\text{mm}$ Housing x2 + $\phi 5\text{mm}$ Brake Line x2



*** IMPORTANT ***

Top Cap Bolt Torque - Max 2N.m

SHIS code: IS52/28.6 | IS52/40

No.	Item	Material	Drawing	Q'ty
1	Top Cover	Composite	TK155SP-1	1
2A	Housing Seal 4mm	NBR	TK155SP-4	2
2B	Housing Seal 5mm	NBR	TK155SP-5	2
3	Top Cover Seal	NBR	TK155-1	1
4	Compression Ring	Composite	TK155-3	1
5	Premium Bearing	Steel	ACB52H7/4	2
6	Crown Race	Alloy	TK1556-6	1

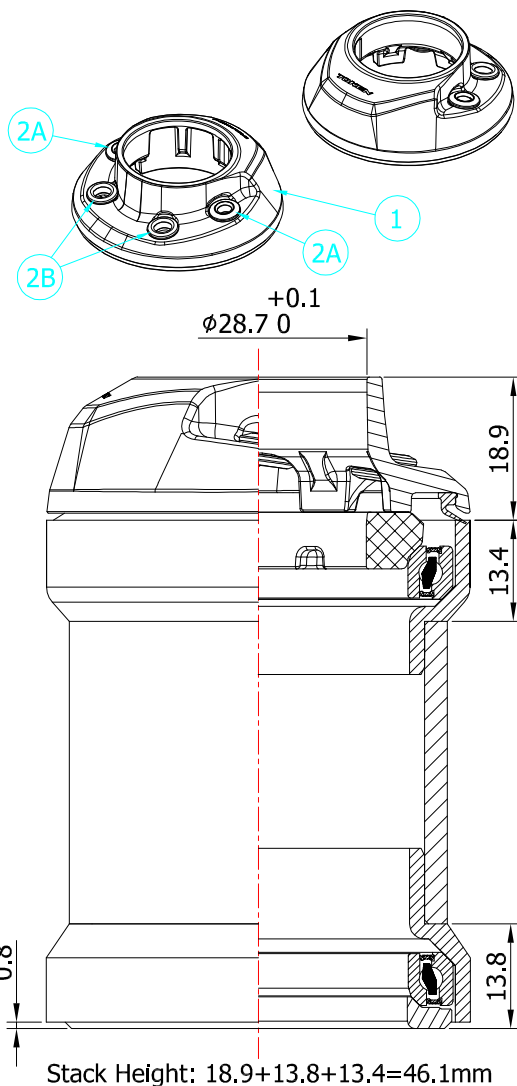
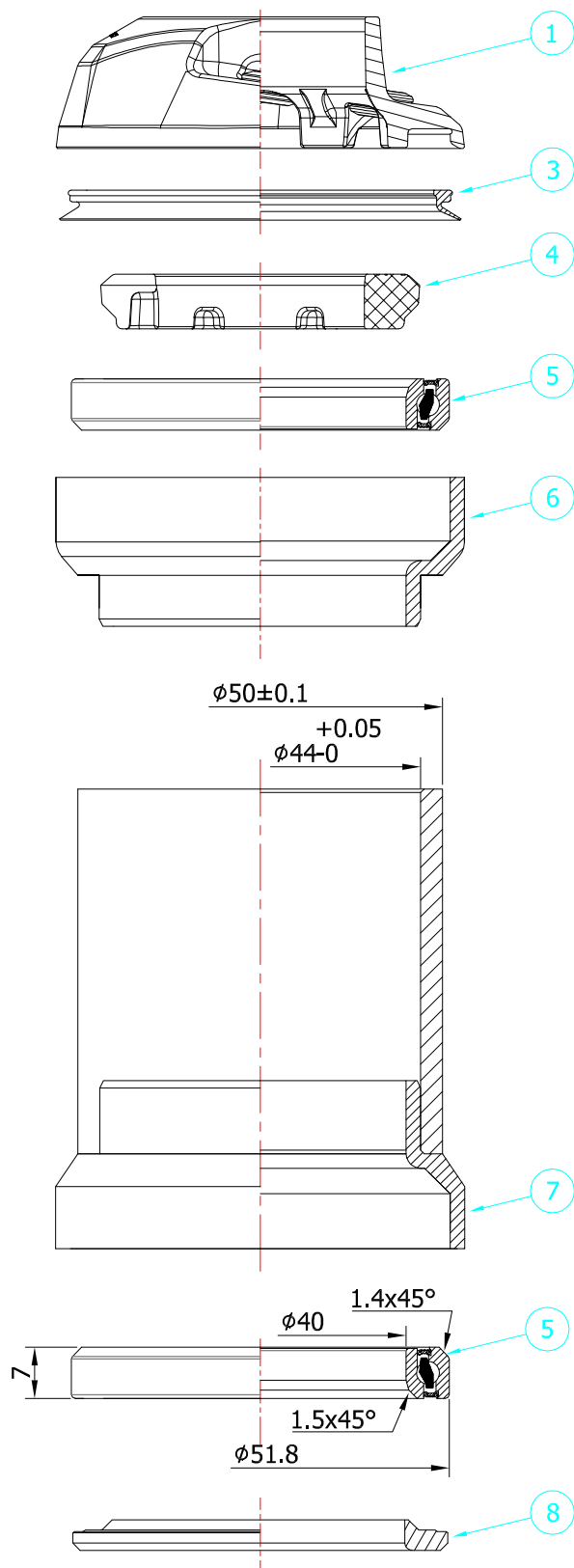
Unit: mm

Scale: 1:1

Revision: D
2021.11.24

TK1536SP-CHHC

S-Box Headset / Proprietary Interface of HL Corp
For $\phi 4\text{mm}$ Housing x2 + $\phi 5\text{mm}$ Brake Line x2



SHIS code: EC44/28.6 | EC44/40

No.	Item	Material	Drawing	Q'ty
1	Top Cover	Composite	TK155SP-1	1
2A	Housing Seal 4mm	NBR	TK155SP-4	2
2B	Housing Seal 5mm	NBR	TK155SP-5	2
3	Top Cover Seal	NBR	TK155-1	1
4	Compression Ring	Composite	TK155-3	1
5	Premium Bearing	Steel	ACB52H7/4	2
6	Upper External Cup	Alloy	TK1536-4	1
7	Lower External Cup	Alloy	036T-5	1
8	Crown Race	Alloy	072-6/2	1

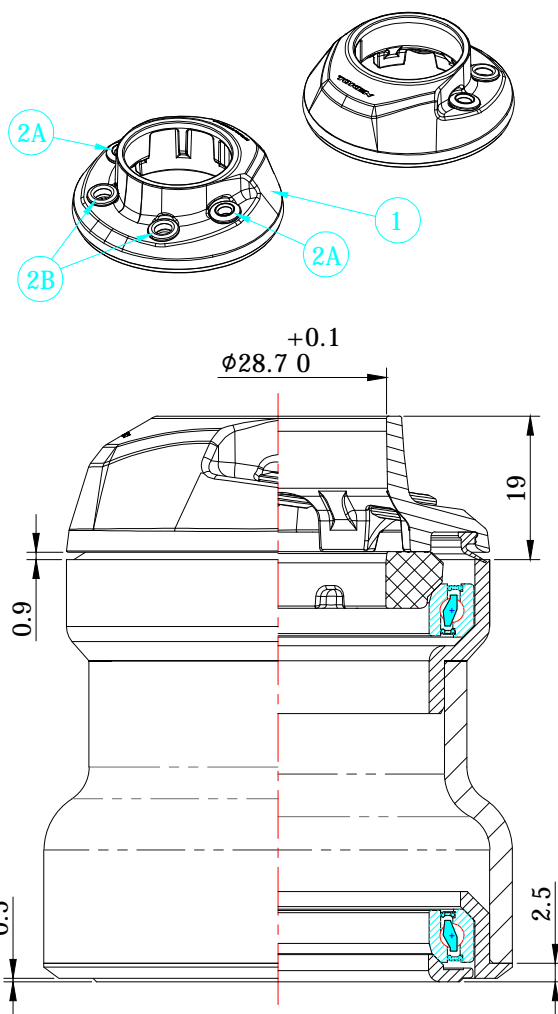
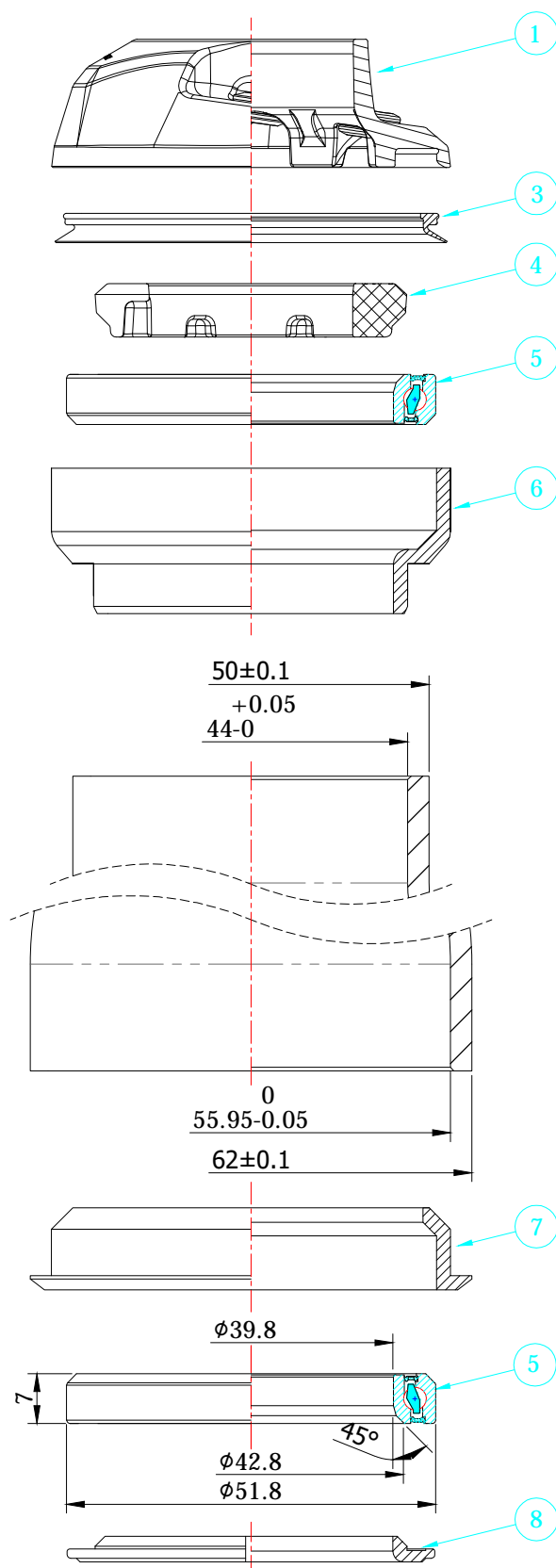
Unit: mm

Scale: 1:1

Revision: A
2021.12.28

TK1537SP

S-Box Headset w/ Alloy Cups and Alloy Crown Race
For $\phi 4\text{mm}$ Housing x2 + $\phi 5\text{mm}$ Brake Line x2



Stack Height:
 $19 + 2.5 = 21.5\text{mm}$

SHIS code: EC44/28.6 | ZS56/40

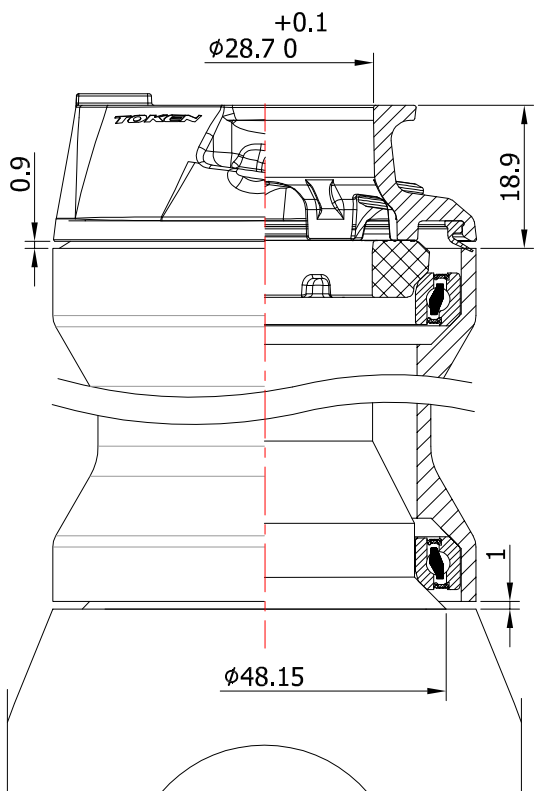
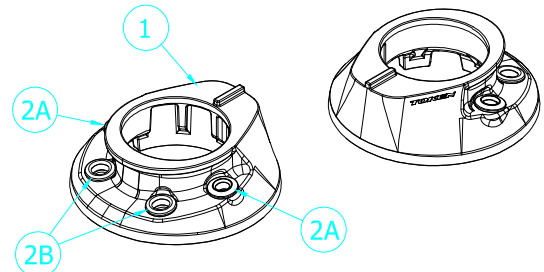
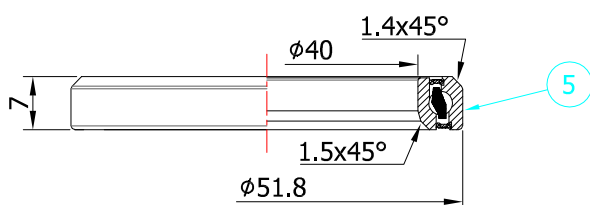
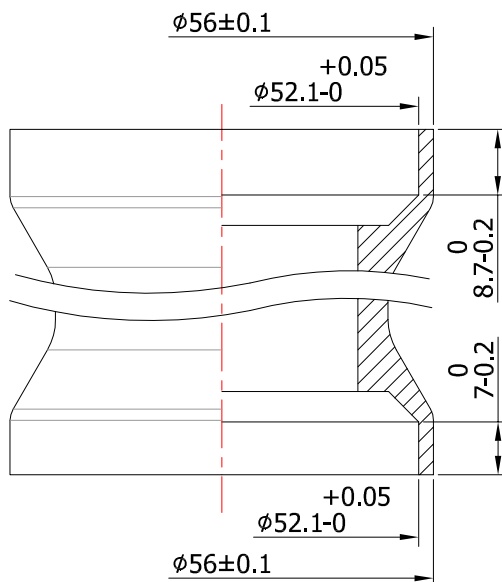
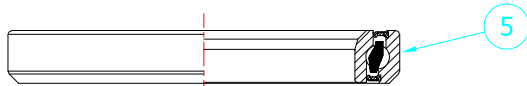
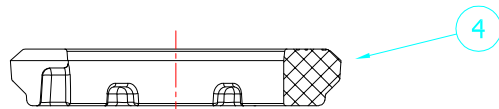
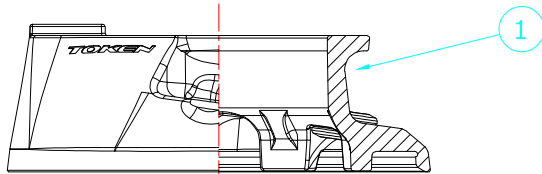
No.	Item	Material	Drawing	Q'ty
1	Top Cover	Composite	TK155SP-1	1
2A	Housing Seal 4mm	NBR	TK155SP-4	2
2B	Housing Seal 5mm	NBR	TK155SP-5	2
3	Top Cover Seal	NBR	TK155-1	1
4	Compression Ring	Composite	TK155-3	1
5	Premium Bearing	Steel	ACB52H7/4	2
6	Upper External Cup	Alloy	TK1536-4	1
7	Lower Cup	Alloy	072-5	1
8	Crown Race	Alloy	TK1556-6	1
Unit: mm		Scale: 1:1		Revision: A
				2021.11.22

TK155SPH

S-Box Headset / Proprietary Interface of HL Corp

For $\phi 4\text{mm}$ Housing x2 + $\phi 5\text{mm}$ Brake Line x2

(TK155SPH-TS-CHHC: With ⑤ Ti-Coated Bearings ACB52H7/4TS)



Stack Height: 18.9+1=19.9mm

SHIS code: IS52/28.6 | IS52/40

No.	Item	Material	Drawing	Q'ty
1	Top Cover	Composite	TK155SPH-1	1
2A	Housing Seal 4mm	NBR	TK155SP-4	2
2B	Housing Seal 5mm	NBR	TK155SP-5	2
3	Top Cover Seal	NBR	TK155-1	1
4	Compression Ring	Composite	TK155-3	1
5	Premium Bearing	Steel	ACB52H7/4	2

Unit: mm

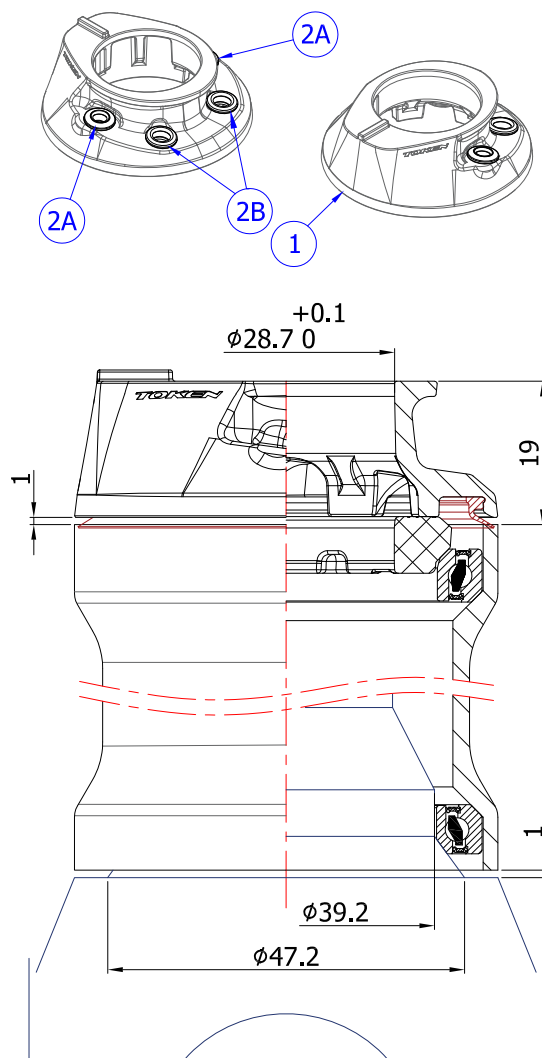
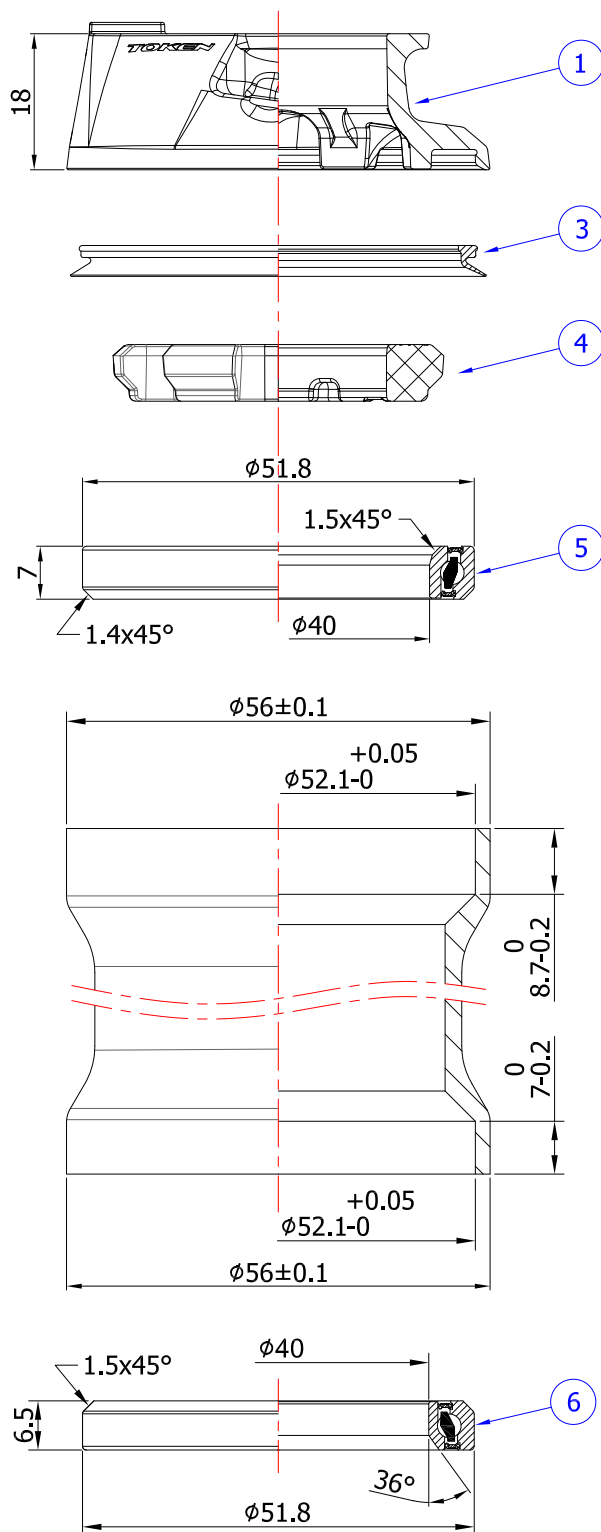
Scale: 1:1

Revision A

2021.12.23

TK155SPH-36-CHHC

S-Box Headset w/ Proprietary Interface of HL Corp.
w/ 45°/ 36° Lower Bearing
For $\phi 4$ mm Housing x2 + $\phi 5$ mm Brake Line x2



Stack Height: 19+1=20mm

SHIS code: IS52/28.6 | IS52/40

No.	Item	Material	Drawing	Q'ty
1	Top Cover	Composite	TK155SPH-1	1
2A	Housing Seal 4mm	NBR	TK155SP-4	2
2B	Housing Seal 5mm	NBR	TK155SP-5	2
3	Top Cover Seal	NBR	TK155-1	1
4	Compression Ring	Composite	TK155-3	1
5	Premium Bearing	Steel	ACB52H7/4	1
6	Premium Bearing	Steel	TK518H65	1

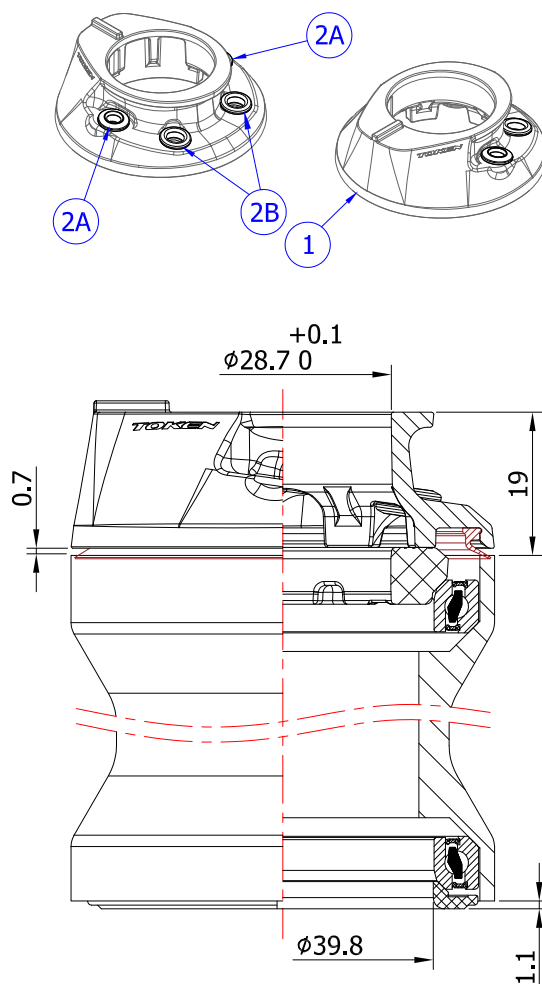
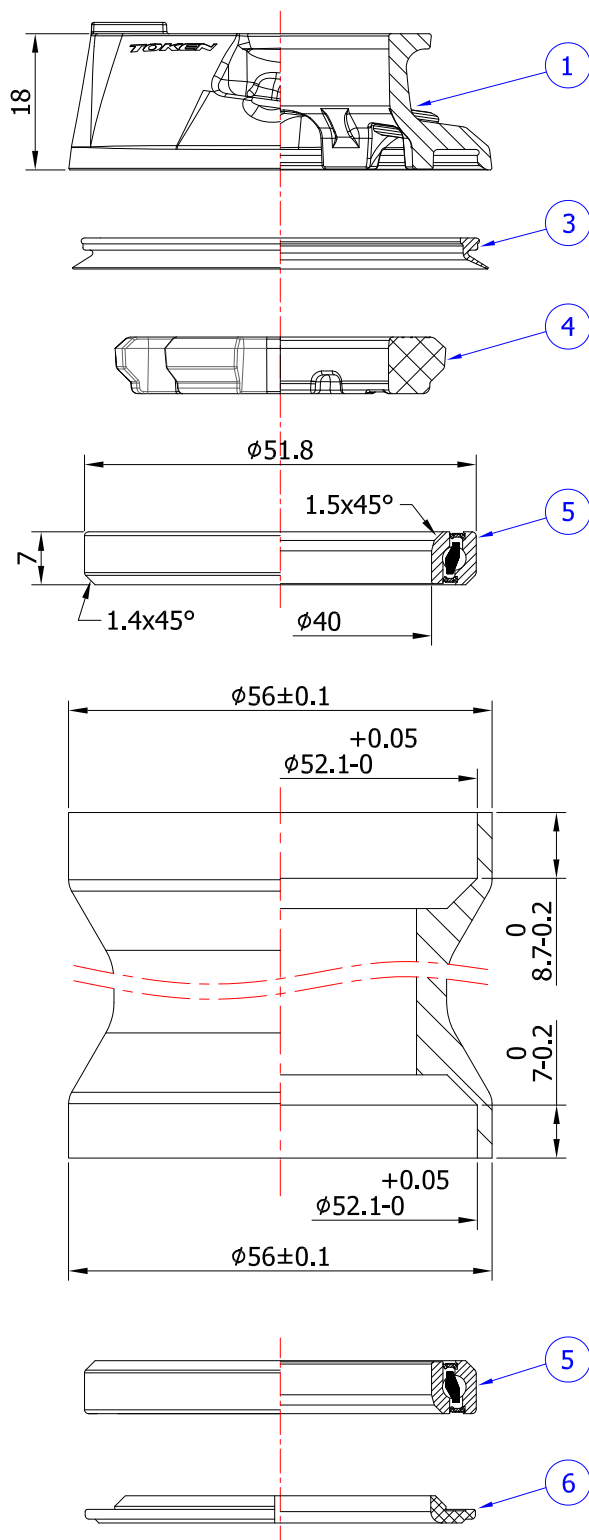
Unit: mm

Scale: 1:1

Revision A
2023.01.04

TK1556SPH-CHHC

S-Box Headset w/ Proprietary Interface of HL Corp.
w/ Alloy Crown Race
For $\phi 4\text{mm}$ Housing x2 + $\phi 5\text{mm}$ Brake Line x2



Stack Height: 19+1.1=20.1mm

SHIS code: IS52/28.6 | IS52/40

No.	Item	Material	Drawing	Q'ty
1	Top Cover	Composite	TK155SPH-1	1
2A	Housing Seal 4mm	NBR	TK155SP-4	2
2B	Housing Seal 5mm	NBR	TK155SP-5	2
3	Top Cover Seal	NBR	TK155-1	1
4	Compression Ring	Composite	TK155-3	1
5	Premium Bearing	Steel	ACB52H7/4	2
6	Crown Race	Alloy	TK1556-6	1

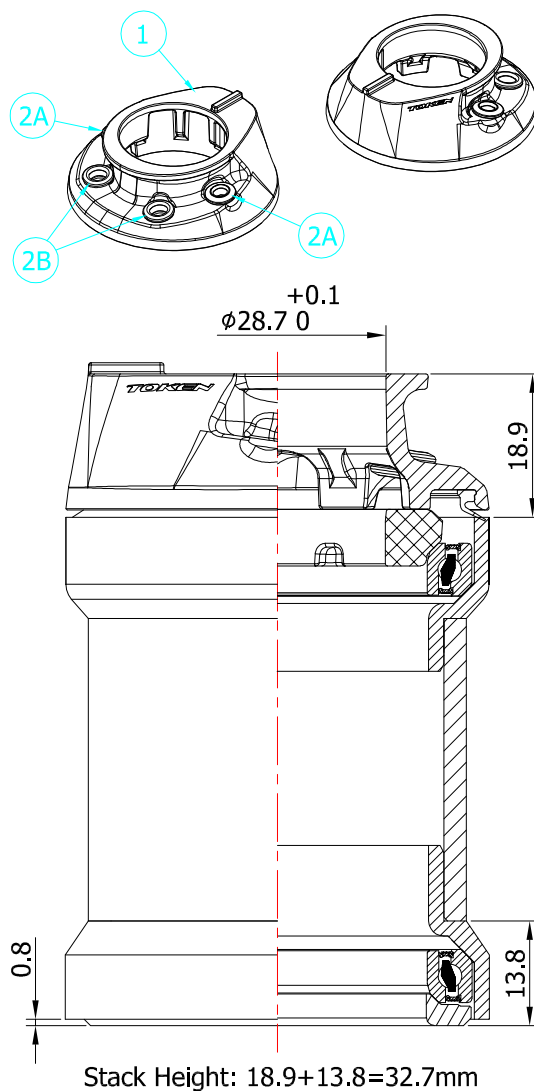
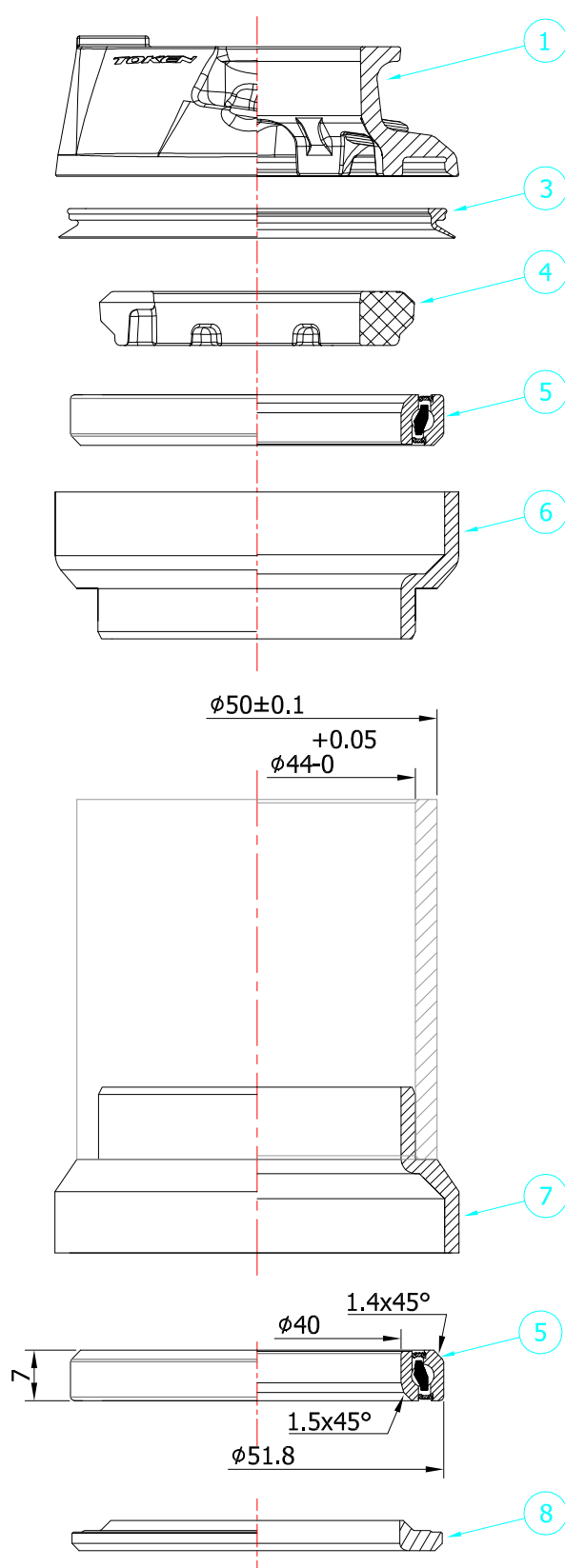
Unit: mm

Scale: 1:1

Revision A
2022.01.04

TK1536SPH-CHHC

S-Box Headset / Proprietary Interface of HL Corp
For $\phi 4$ mm Housing x2 + $\phi 5$ mm Brake Line x2



SHIS code: EC44/28.6 | EC44/40

No.	Item	Material	Drawing	Q'ty
1	Top Cover	Composite	TK155SPH-1	1
2A	Housing Seal 4mm	NBR	TK155SP-4	2
2B	Housing Seal 5mm	NBR	TK155SP-5	2
3	Top Cover Seal	NBR	TK155-1	1
4	Compression Ring	Composite	TK155-3	1
5	Premium Bearing	Steel	ACB52H7/4	2
6	Upper External Cup	Alloy	TK1536-4	1
7	Lower External Cup	Alloy	036T-5	1
8	Crown Race	Alloy	072-6/2	1

Unit: mm

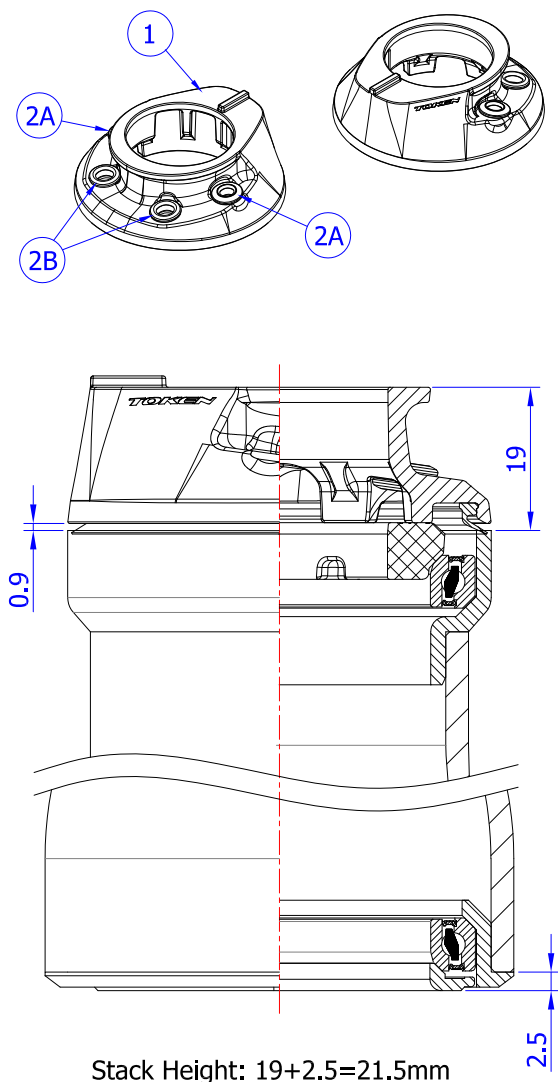
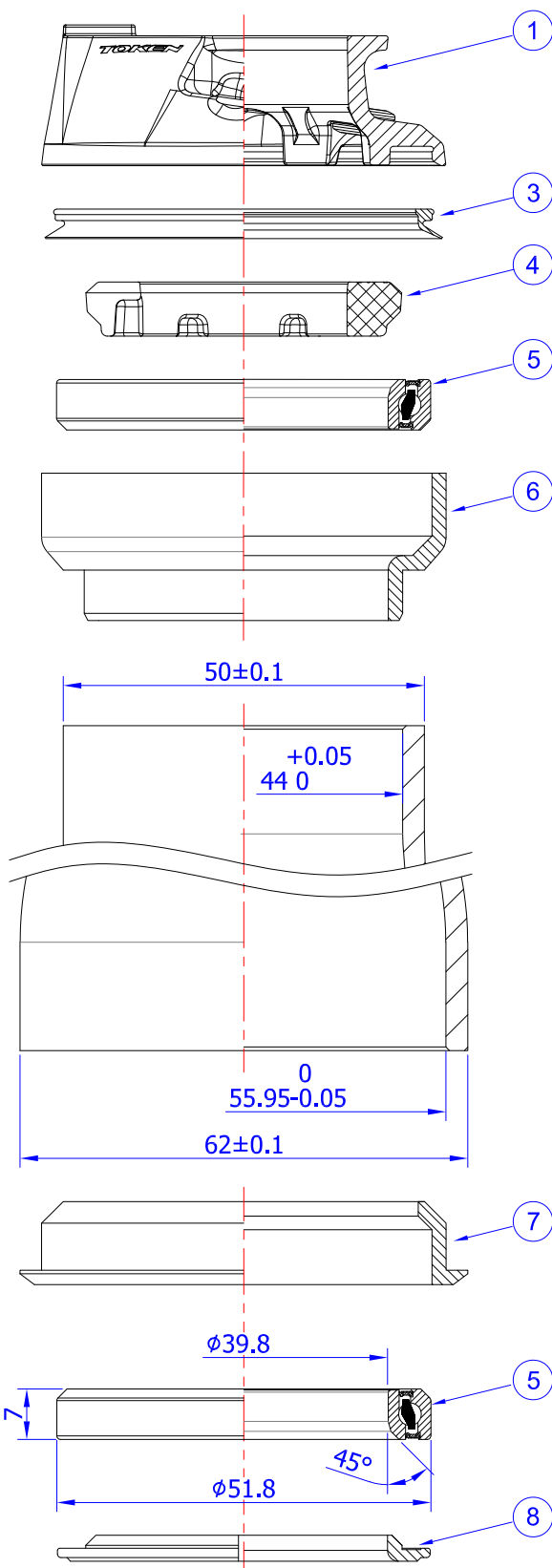
Scale: 1:1

Revision: B
2021.11.24

TOKEN HEADSET TECHNICAL MANUAL

TK1537SPH

S-Box Headset / Proprietary Interface of HL Corp
For $\varnothing 4\text{mm}$ Housing x2 + $\varnothing 5\text{mm}$ Brake Line x2



SHIS code: EC44/28.6 | ZS56/40

No.	Item	Material	Drawing	Q'ty
1	Top Cover	Composite	TK155SPH-1	1
2A	Housing Seal 4mm	NBR	TK155SP-4	2
2B	Housing Seal 5mm	NBR	TK155SP-5	2
3	Top Cover Seal	NBR	TK155-1	1
4	Compression Ring	Composite	TK155-3	1
5	Premium Bearing	Steel	ACB52H7/4	2
6	Upper External Cup	Alloy	TK1536-4	1
7	Lower Cup	Alloy	072-5	1
8	Crown Race	Alloy	TK1556-6	1
Unit: mm		Scale: 1:1		Revision: B
				2023.08.30