

M-BOX Headset

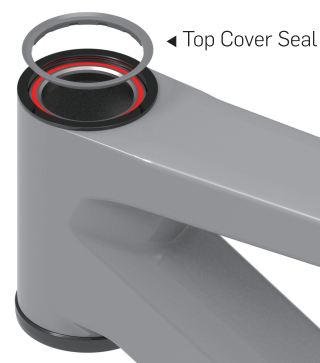
Installation Instruction

- 01** The bottom headset cup should be installed before installing the M-BOX headset on the top of the headtube.

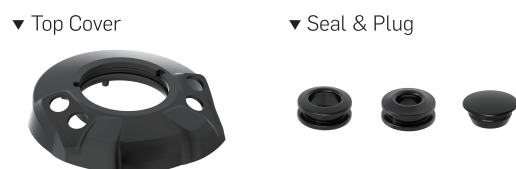
- 02** Press the upper cup of the M-Box headset into the ZS56 head tube, then put the headset bearing in. Note the outer chamfer on the bearing should face down toward the upper cup.



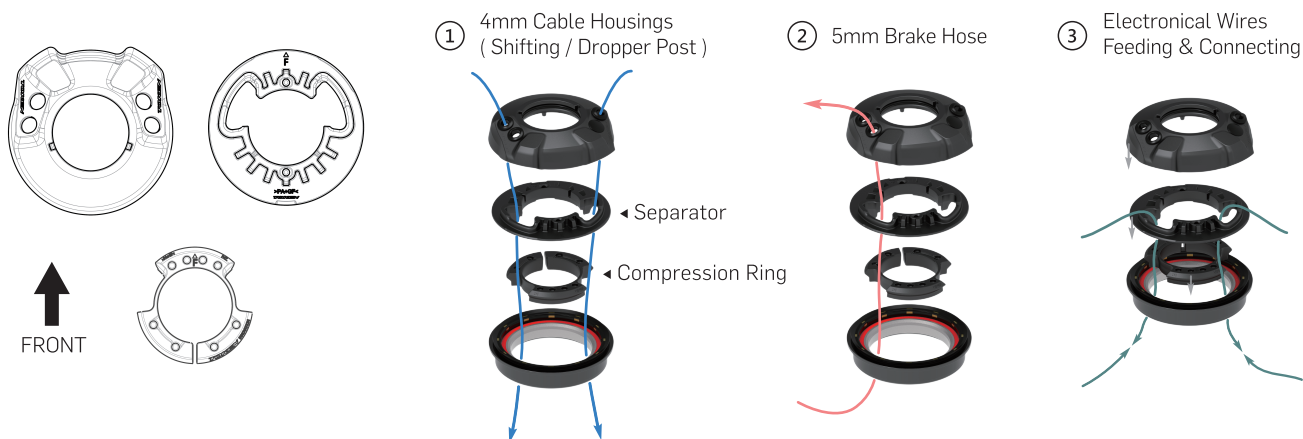
- 03** Apply a thin layer of lubricant to the inner edge of the upper cup, then assemble the seal. The seal lip should be facing up.



- 04** Assemble the proper housing seals (grommets) or port plug as needed onto the headset top cover.



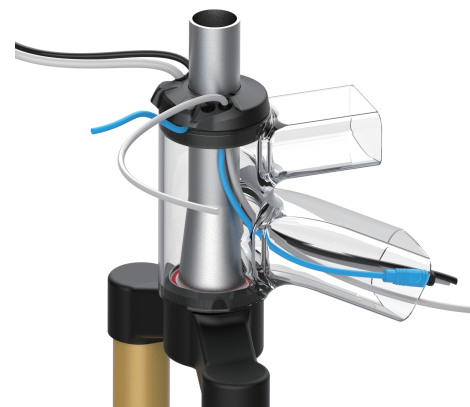
- 05** Starting from the stiffer 4 mm cable housing then 5 mm hydraulic hoses, feed the cables through the headset top cover (with housing seals assembled) and the separator under it. Lubricate the cables slightly will make the process easier. Then, feed the electrical wires through the separator, and bend them downward for the next step.



- 06** Complete the installation of the M-BOX headset – including the compression ring as shown on the right.

NOTICE

- Be careful not to pinch the electrical wires.
- Electrical wires left outside of the headtube should be attached to hardcables (such as derailleur cable housing), handlebar or stem with fastener like cable tie or cable wrap. This prevents core rupture as well as the wire sliding in / out of the wire tunnel of the headset over time.



- 07** Complete the installation of the fork, stem and headset compression device (star nut or expander) following the manufacturers' instruction.

M-BOX Headset

Installation Instruction

01 請在開始安裝M-BOX上半部碗組之前，先將下碗壓入車架頭管中。

02 將M-BOX的鋁碗壓入ZS56頭管後，再放入上培林。留意培林外斜角須朝下擺放。



03 在鋁碗內圈塗上一層薄薄的潤滑油，並裝上防水圈。防水圈的橡膠唇朝上。



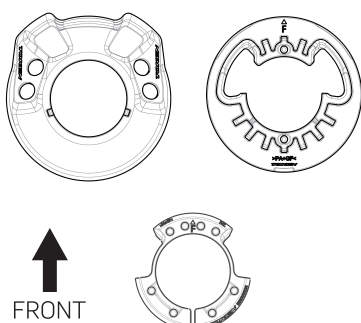
04 上蓋依照要穿過的線徑種類，安裝合適的防水塞。

▼ 上蓋

▼ 防水塞 & 橡膠塞



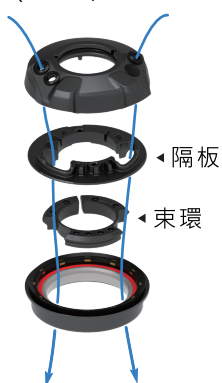
05 依序將較硬的 4 mm 外管與 5 mm 剎車油管，穿過裝有合適防水塞的上蓋以及其下方的隔板。在管線上塗抹少量的潤滑油可以讓穿線更容易。然後，將電線穿過隔板，並將電線露出的部分稍微往下折彎以方便下一個安裝步驟。



① 4 mm 外管
(變速 / 升降座管)

② 5 mm 剎車油管

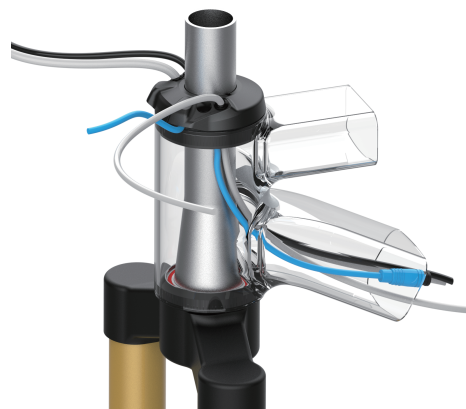
③ 穿過及連接電線



06 如右圖，完成包含束環在內的碗組零件安裝。

注意

- 請留意不要夾傷電線。
- 留在頭管外的電線應以束線帶或纏繞條等方式將其固定在硬管線（如變速線外管）、把手或龍頭上，這麼做可防止電線的銅芯因長期震動而受損，或者是電線沿著碗組滑出 / 滑進車架頭管中。



07 依照前叉、立管及碗組迫緊器的說明指示完成後續安裝。