

# MB-Box Headset

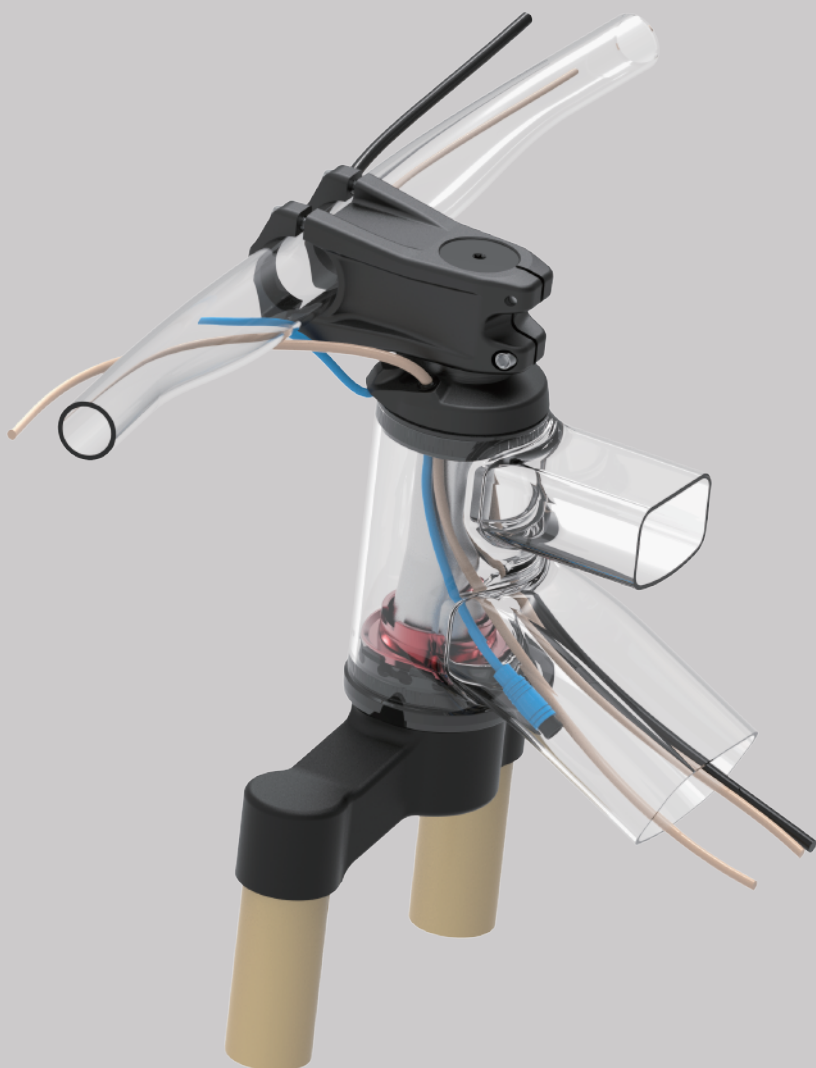
## Semi-Integrated Cable Routing System for **MTB** and **eMTB** with **Rotation Block**

Semi-integrated cable routing system with patented double-security rotation block design on the lower cup.

Head Tube Size:

Top TID. : Dia.56mm

Bottom BID: Dia. 56mm (1.5") or 66mm (1.8")





Bar, Stem & Fork: Standard

MB-BOX (w/Rotation Block Set)

Crown Race Secure Design:

Crown is designed with split and locking bolt to tighten and secure.

Unique locking bolt design for easily tightening without self-loosing.

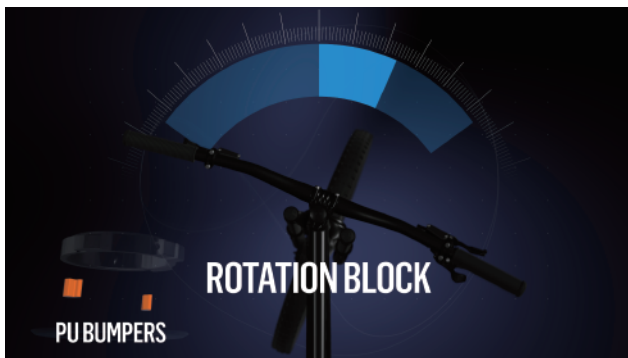
Easily to install & removal without damage the fork.

Patent Pending.

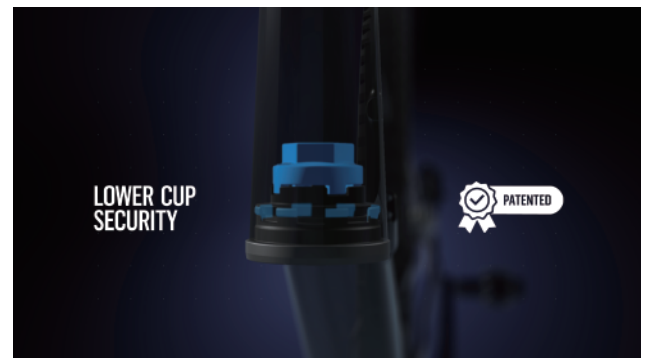


Block Set Intro

# MB-BOX



H/Bar Spinning Angle 124 deg



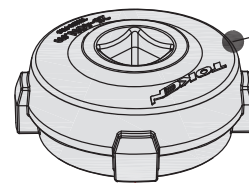
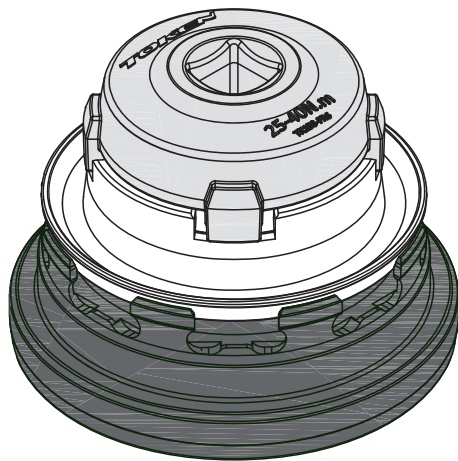
Double Security Construction



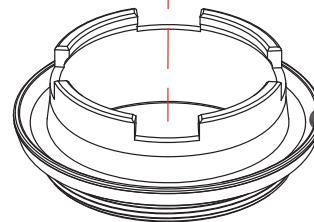
## BLOCK SET for ZS56 HEADTUBE

TK158-ZS56

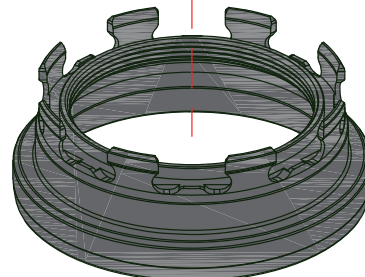
### Installation Instructions



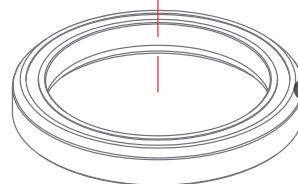
TOOL  
#TK158-FR6



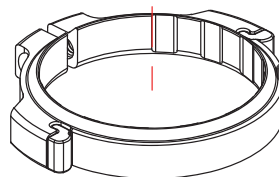
1



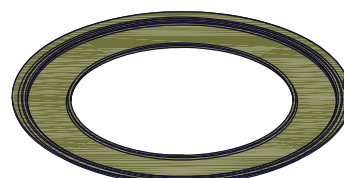
2



3



4



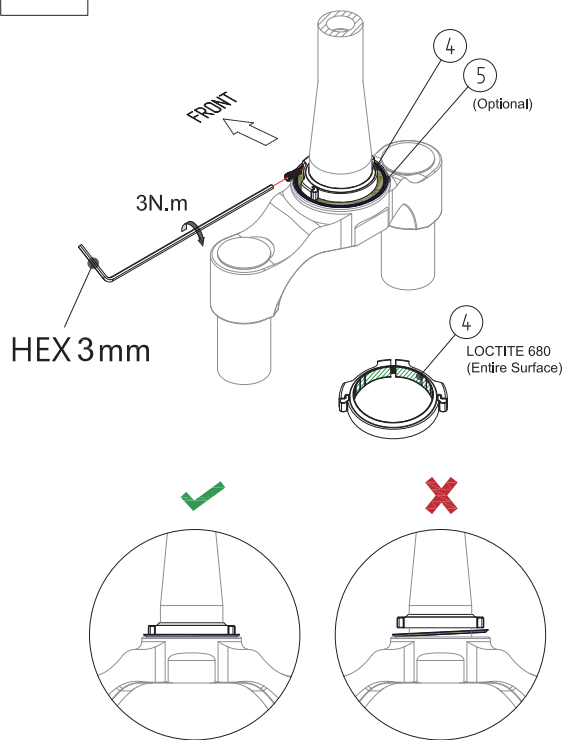
5

(Optional)

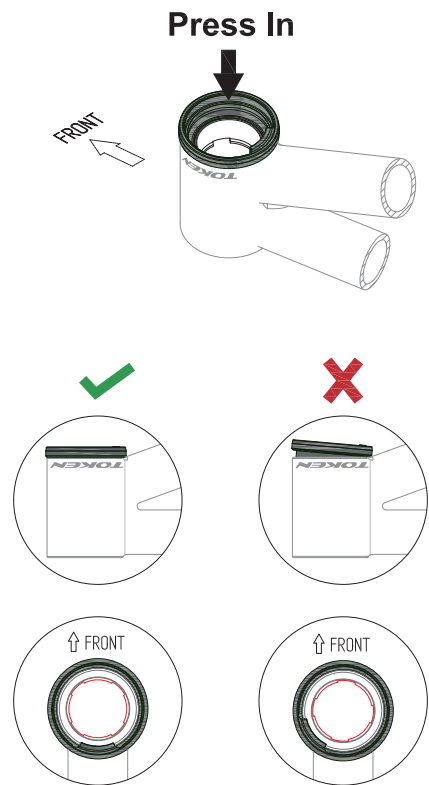
# BLOCK SET Installation Instruction

2022-Sep.

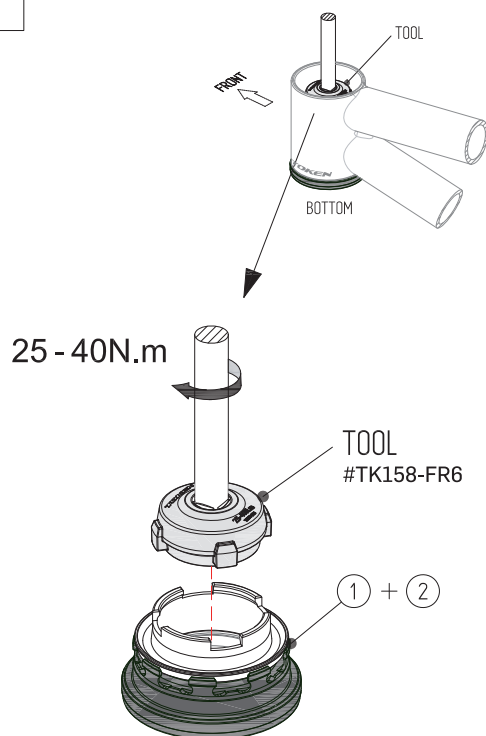
1



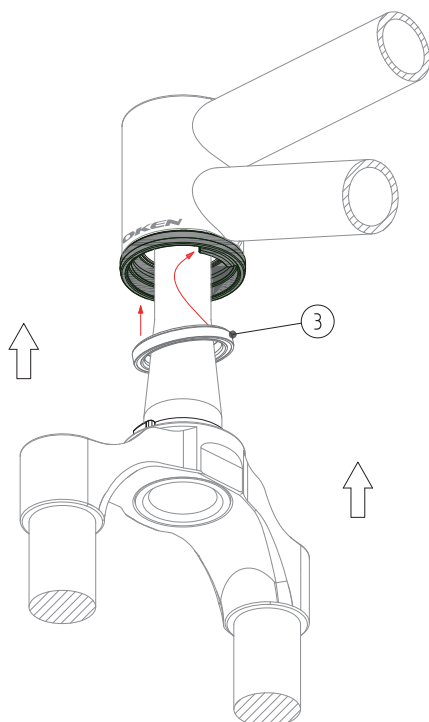
2



3



4





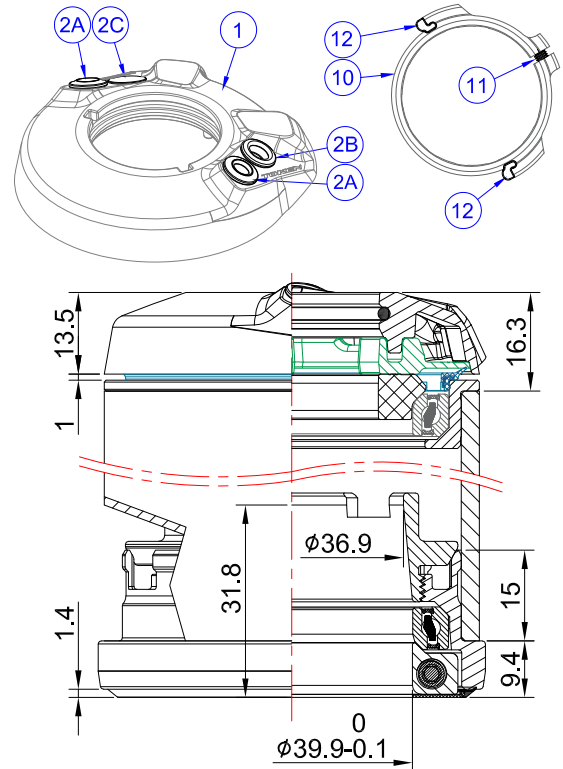
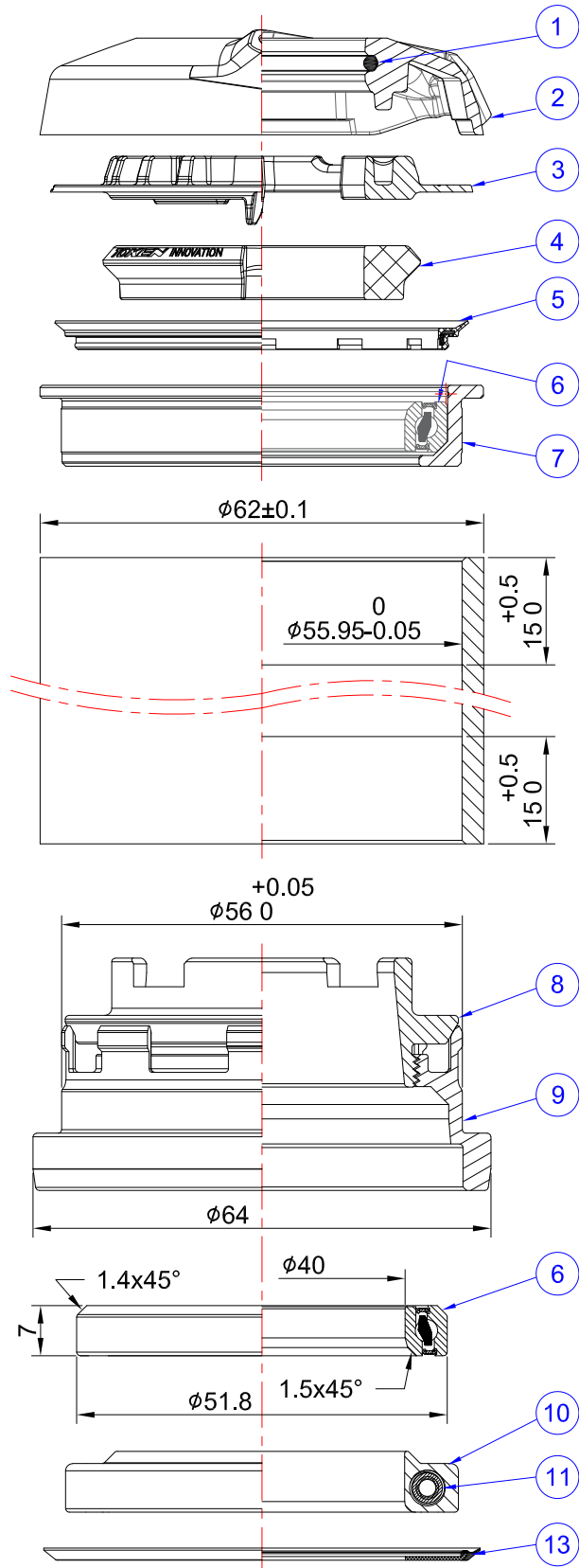
# MB-BOX NEW

Semi-Integrated Cable Routing System for MTB and eMTB with Rotation Block

## TK3566B-COHC

MB-Box Headset w/ 1.5" Block Set

For  $\phi 4$  Cable Housing \*2 +  $\phi 5$  Brake Line \*1 plus Additional Wires



Scale = 0.8 : 1

- Fork Steerer: Taper 1-1/8" to 1.5"
- Stack Height: 16.3+9.4 = 25.7mm

SHIS code: ZS56/28.6 | ZS56/40

No.	Item	Material	Drawing	Q'ty
1	O-ring	NBR	AS024	1
2	Composite Top Cover	Composite	TK355-1	1
2A	Housing Grommet 4mm	NBR	TK155SP-4	2
2B	Housing Grommet 5mm	NBR	TK155SP-5	1
2C	Port Plug	NBR	TK155SP-6	1
3	Separator	Composite	TK355-2	1
4	Compression Ring	Composite	TK155M-3	1
5	Seal	SPCC+NBR	TK355-4	1
6	Premium Bearing	Steel	ACB52H7/4	2
7	Upper Cup	Alu-Alloy	TK355-5	1
8	Expansion Ring	Alu-Alloy	TK158-ZS56-9	1
9	Lower Cup	Alu-Alloy	TK158-ZS56-4	1
10	Crown Race	Alu-Alloy	TK158-ZS56-6	1
11	Pinch Bolt	Steel	TK158-8	1
12	PU Insert	PU	TK158-10	2
13	Bottom Seal	Steel & NBR	TK158-ZS56-8	1

Unit: mm

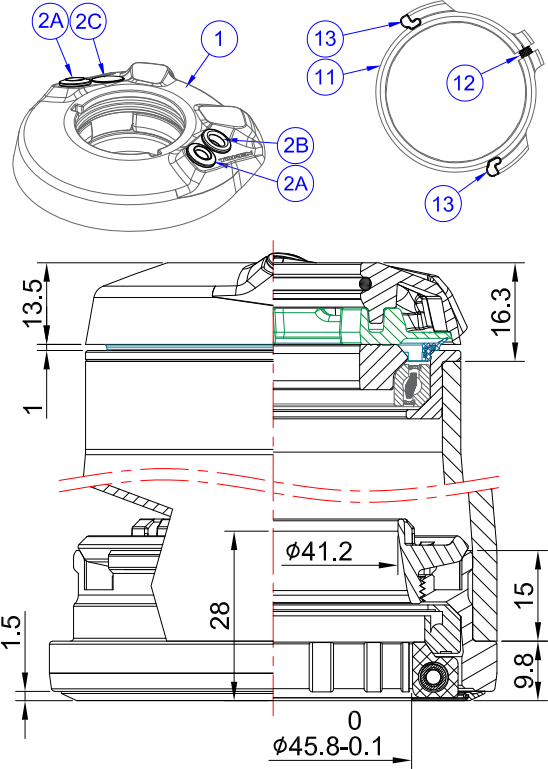
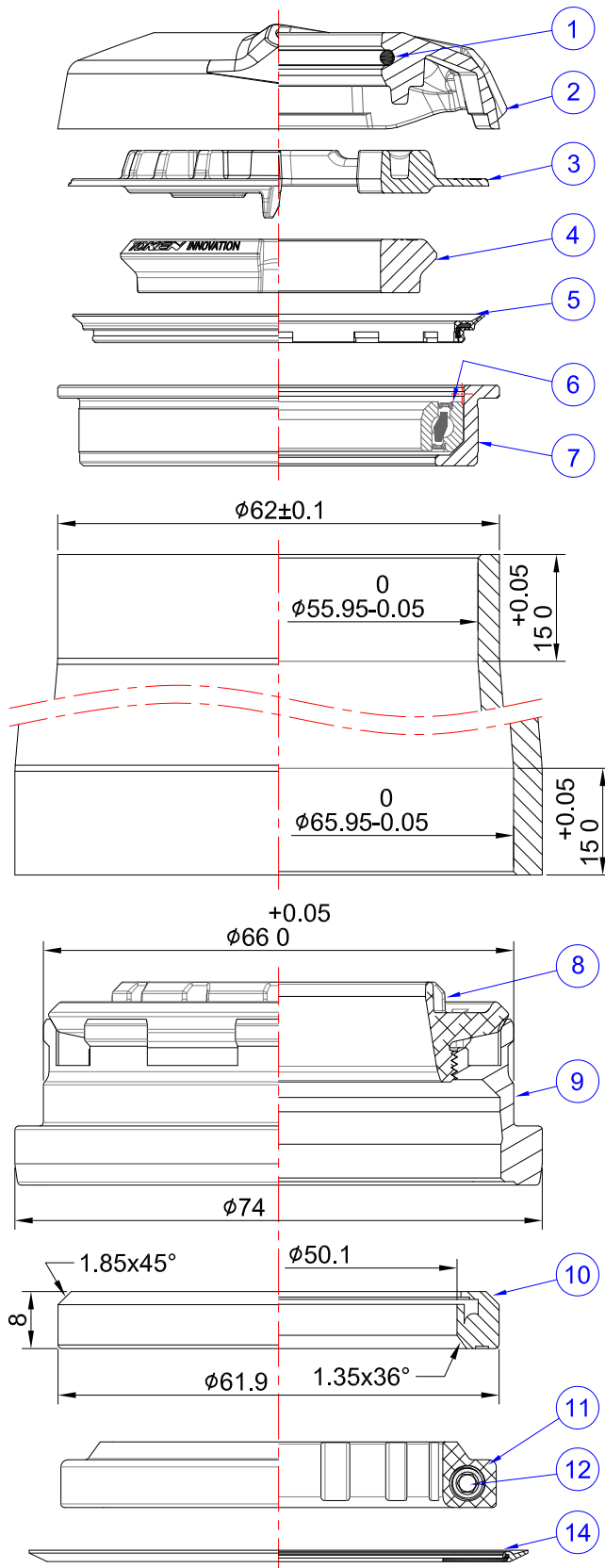
Scale: 1:1

Revision: B  
2022.12.26

## TK3586B-COHC

MB-Box Headset w/ 1.8" Block Set

For  $\phi 4$  Cable Housing \*2 +  $\phi 5$  Brake Line \*1 plus Additional Wires



Scale = 0.8 : 1

- Fork Steerer: Taper 1-1/8" to 1.8"
- Stack Height: 16.3+9.8 = 26.1mm

SHIS code: ZS56/28.6 | ZS66/46

No.	Item	Material	Drawing	Q'ty
1	O-ring	NBR	AS024	1
2	Composite Top Cover	Composite	TK355-1	1
2A	Housing Grommet 4mm	NBR	TK155SP-4	2
2B	Housing Grommet 5mm	NBR	TK155SP-5	1
2C	Port Plug	NBR	TK155SP-6	1
3	Separator	Composite	TK355-2	1
4	Compression Ring	Composite	TK155M-3	1
5	Seal	SPCC+NBR	TK355-4	1
6	Premium Bearing	Steel	ACB52H7/4	1
7	Upper Cup	Alu-Alloy	TK355-5	1
8	Expansion Ring	GF Composite	TK158-ZS66-9	1
9	Lower Cup	Alu-Alloy	TK158-ZS66-4	1
10	Sealed Bearing	Steel	ACB619	1
11	Crown Race	Alu-Alloy	TK158-ZS66-6	1
12	Pinch Bolt	Steel	TK158-8	1
13	PU Insert	PU	TK158-10	2
14	Bottom Seal	Steel & NBR	TK158-ZS66-8	1

Unit: mm

Scale: 1:1

Revision: B  
2022.12.26